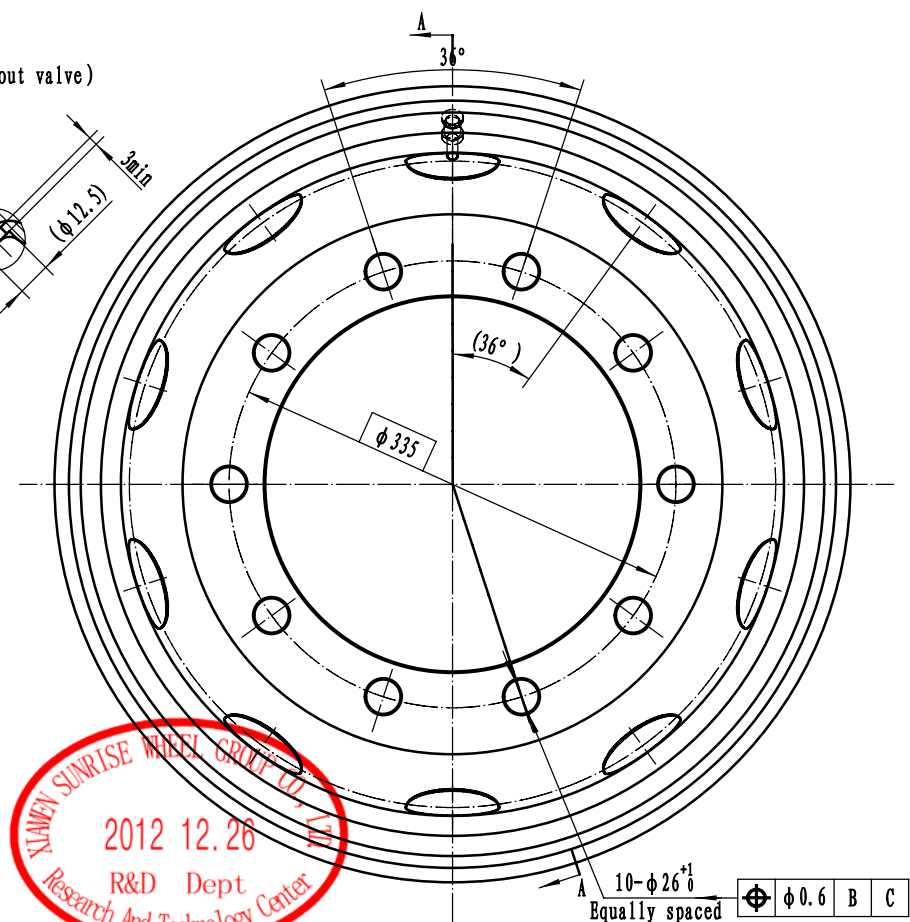
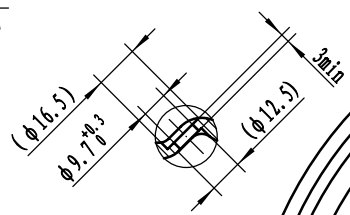


2: 1 (Without valve)



CONFIRMED DRAWINGS
 Confirm OK or NG: _____
 SIGNATURE: _____
 DATE: _____

XIAMEN SUNRISE WHEEL GROUP CO., LTD.
 2012.12.26
 R&D Dept
 Research And Technology Center

Technical Requirements:

1. The rim profile shall conform to GB/T3487-2005 Serial Standards of Automotive Rim Contours;
2. The wheel shall conform to GB/T5909-2009 Performance Requirements and Test Methods of Truck Wheels;
3. The wheel balance test shall conform to QC/T242-2004 Unbalance Requirements and Test Methods of Vehicle wheels;
4. The painting of wheel shall conform to Vehicle Paint Coating Requirements Q/RSLC001-2010. Liquid paint thickness >40um (Powder coat paint thickness >70um); resistance in Salt Spray Test >500hours; adhesive force test shall conform to Grade 0⁻1; Paint Hardness >2H;
5. The wheel shall bear no welding slag, no burr, no welding defects with firm seam. Surface of wheel shall be smooth, without laminated crack, mechanical pitting or painting pocks and other defects;
6. Designed load capacity: 3600kgs;
7. Brand, size, offset and tracking number shall be stamped per stamp requirements;

3	V3-20-1A	valve stem	1			outsourcing	
2	322001B	disc	1	SW400 (or equivalent material)	19.4	19.4	
1	322823	rim	1	490CL (or equivalent material)	21.58	21.58	
NO.	DRG. NO	PART NAME	QTY	MATERIAL	Unit	Total	NOTE
					Weight		

Version/Serial/Content describe/Change						Signature/Date			Wheel 1 XIAMEN SUNRISE WHEEL GROUP Co., Ltd 22.5 × 8.25H		
DES	Hui Deng	2012.7.4	Standardized	Shixiu Han	2012.12.26	Phase mark					
PROOFED	Jia Li	2012.7.4				S	A	B	40.98KG	1:4	9228204
VERIF	Qingbao Liu	2012.7.5				Total 1 page				page 1	
PROCESS	Xianchun Guo	2012.7.4	Approved	Wanbiao Jiang	2012.7.5						